



HOME OF THE BAREFOOT LEARNER

Kainga o ngā akonga māhorahora

---

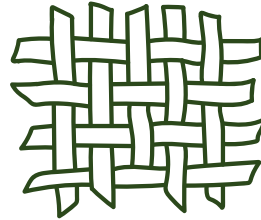
**Charter 2021 - 2023**

**We know that Paekākāriki kids are special and we nurture and celebrate the blend of qualities that make our students unique. Our consultation with students, parents and our wider community helped us identify the wonderful, free-spirited qualities of the Barefoot Learner at Paekākāriki School.**

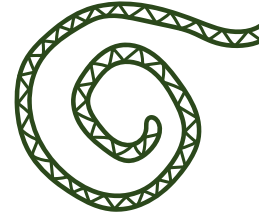
**We value the four core principles of:**



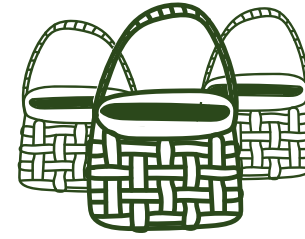
**Belonging**  
Tūrangawaewae



**Connecting**  
Whanaungatanga



**Exploring**  
Whakatōmene



**Thriving**  
Whakapuāwai

This Charter embeds those four core principles as the kaupapa of our school. These principles are already visible in our school environment, in how the curriculum is delivered and in how we choose the learning priorities for our tamariki. They align with the New Zealand Curriculum key competencies ensuring our tamariki have the capabilities for living and lifelong learning and they connect with Tātaiako, Cultural Competencies for Teachers of Māori Learners.

The Charter is backed up by the Strategic Plan, which defines the broad operational steps the school will take to put these principles into action. Both the Charter and the Strategic Plan are living expressions of our community's vision and both will grow and adapt to suit our children's changing needs.

The Charter is reviewed annually by the Board of Trustees and the Board will take all reasonable steps to ensure the school meets the Charter goals and objectives while adhering to the National Education and Administration Guidelines.

# Paekākāriki School

Home of the Barefoot Learner.



**Belonging**

**Connecting**

**Exploring**

**Thriving**

# Our Guiding Principles

## Belonging Tūrangawaewae



*"I feel at home and I can be myself."*

## Learners:

- Develop and celebrate a sense of self.
- Express their individuality, knowing that individuality is nurtured and celebrated at our school.
- Embrace diversity.
- Are included and include others.
- Have a sense of our kura as tūrangawaewae.
- Experience the uniqueness of our village.
- Feel comfortable and at home at Paekakariki School.
- Play and learn together.
- Experience a holistic education.
- Experience teaching that fosters self-worth.

**New Zealand Curriculum Key Competencies:** Managing Self, Relating to Others

**Belonging**

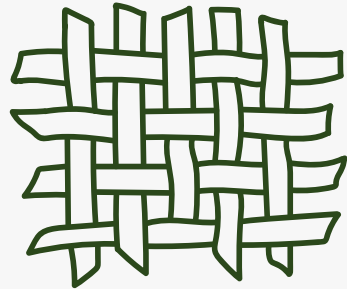
**Connecting**

**Exploring**

**Thriving**

# Our Guiding Principles

## Connecting Whanaungatanga



*"I care for and contribute to others  
and our environment."*

## Learners:

Are connected to:

- Each other
- Tangata whenua
- Mana whenua
- The environment
- The community
- The wider world
- Show guardianship and protection of local eco-systems.
- Build relationships that are strong, loving and respectful.
- Enjoy strong tuakana/teina relationships.
- Know how to work as part of a team.

**New Zealand Curriculum Key Competencies:** Relating to others

**Belonging**

**Connecting**

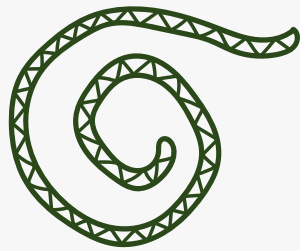
**Exploring**

**Thriving**

# Our Guiding Principles

## Exploring

### Whakatōmene



*"I am curious and creative. I enjoy asking questions and I am excited about discovering new things."*

### Learners:

- Are engaged and inspired.
- Understand their own unique way of learning.
- Question.
- Learn, observe, teach and advise together.
- Are curious and discover new things.
- Learn with their heads, their hearts, their hands.
- Learn through being creative.
- Are critical thinkers.
- Contribute and make a difference through applying their learning to real world problems.
- We are all teachers and learners.

**New Zealand Curriculum Key Competencies:** Thinking

**Belonging**

**Connecting**

**Exploring**

**Thriving**

# Our Guiding Principles

## Thriving

### Whakapuāwai



*"I am a confident, resilient and inspired learner."*

### Learners:

- Develop strong foundation skills.
- Are equipped for their next steps.
- Are passionate learners.
- Are inspired to be positive citizens who make a difference in the world.
- Share their ideas.
- Achieve to their fullest potential.
- Develop resilience.

**New Zealand Curriculum Key Competencies:** Participating and contributing, Using language, symbols and text

**Belonging**

**Connecting**

**Exploring**

**Thriving**

# Supporting Documents

- Paekakariki School curriculum documents
- 5-year property plan
- Strategic Plan and Annual Plan
- Policies and procedures (SchoolDocs)
- Parent information booklet
- Positive Behaviour Guidelines
- Staff code of conduct
- Board code of conduct

**Belonging**

**Connecting**

**Exploring**

**Thriving**